

VI	Violin	FL	Flute	FH	F Horn	SN	Snare	SC	Susp. Cym.	TE	Tom-toms
VA	Viola	OB	Oboe	TP	Trumpet	BD	Bass Drum	GL	Tube bells	CM	Cymbals
CO	Cello	CL	Clarin.	TB	Trombone	TM	Timpani	MR	Maraca		
DB	Db1 Bass	BN	Bassoon	TU	Tuba	BT	Bell Tree	SB	Scrape Block		

INCIDENTAL MUSIC FOR HENRY V

BY

RHETT BROWN

TOM GULLETTE



$\text{♩} = 100$
① Overture

Handwritten musical score for the first system, featuring a treble clef staff (labeled 'AL') and a bass clef staff (labeled 'SN'). The treble staff contains a melodic line with some notes and rests. The bass staff contains a bass line with a 4/4 time signature and a double bar line.

Handwritten musical score for the second system, featuring a treble clef staff (labeled 'FL') and a bass clef staff (labeled 'SN'). The treble staff contains a melodic line with notes and rests, including some accidentals. The bass staff contains a bass line with notes and rests.

Handwritten musical score for the third system, featuring a treble clef staff (labeled 'AL') and a bass clef staff (labeled 'SN'). The treble staff contains a melodic line with notes and rests. The bass staff contains a bass line with notes and rests.

Handwritten musical score for the fourth system, featuring a treble clef staff (labeled 'FL') and a bass clef staff (labeled 'SN'). The treble staff contains a melodic line with notes and rests, including some accidentals. The bass staff contains a bass line with notes and rests.



FL
TP
FHT
FHZ

2

(B)

PL VA/VI

Rousing *mf*

TP FH

Rousing *ff*

TU

Rousing

CM

Rousing

PL VA/VA

TP FH

TU

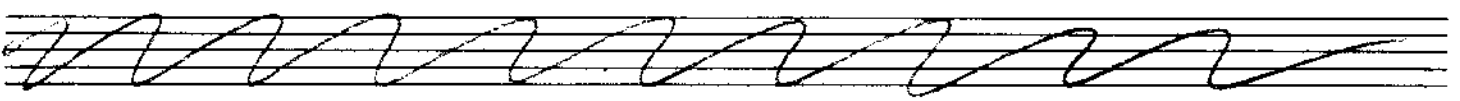
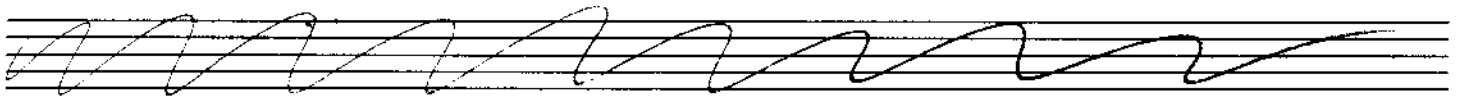
CM

tr.

f

f

ff



(6)

FL
U/NA

TP
FH

TU

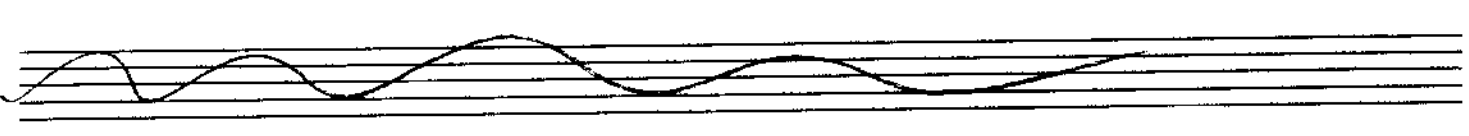
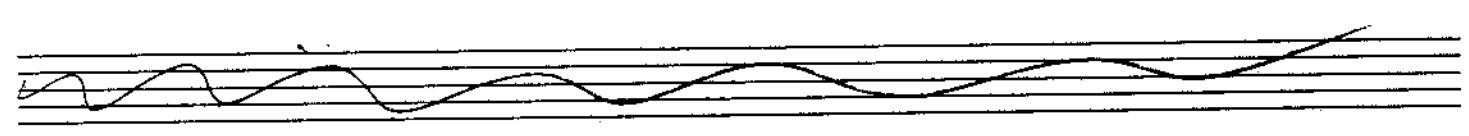
CM

FL
U/NA

TP
FH

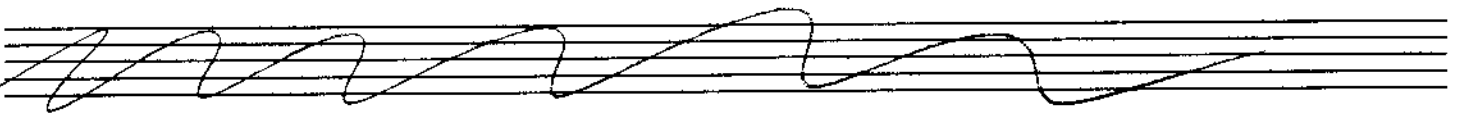
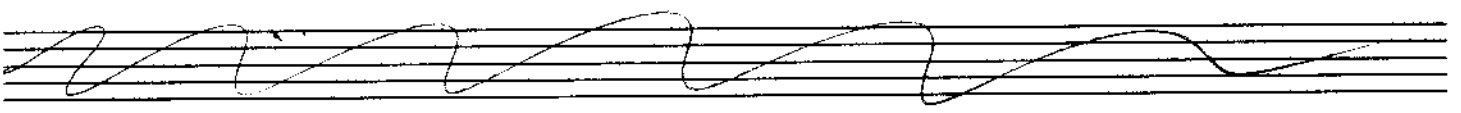
TU

CM



Handwritten musical score for guitar, first system. It consists of five staves. The top staff is in treble clef with a key signature of one sharp (F#) and a 3/4 time signature. It contains a melodic line with triplets and a final measure with a fermata and the handwritten note "trill". The second staff is also in treble clef with a 4/4 time signature, containing a bass line with triplets. The third staff is in bass clef with a 4/4 time signature, containing a bass line with a circled "E" and a fermata. The fourth and fifth staves are empty.

Handwritten musical score for guitar, second system. It consists of five staves. The top staff is in treble clef with a 3/4 time signature, containing a melodic line with a fermata. The second staff is in treble clef with a 4/4 time signature, containing a bass line with triplets. The third staff is in bass clef with a 4/4 time signature, containing a bass line with a circled "E" and a fermata. The fourth and fifth staves are empty.

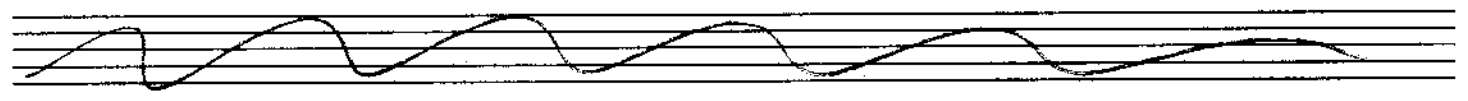
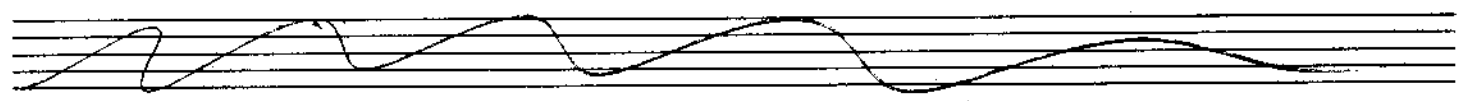


FL
VI/VA

TP
FH

TU

CM



FL
VI/VA

TP
T2

R

CM

END, OVERTURE
(Cont. CUE)

25

TO

SN

30

TO

SN


Cond lib. similar less → more patterns

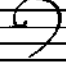
38

TO

SN



	$\frac{1}{2}$	$\frac{1}{2}$	$\frac{1}{2}$	$\frac{1}{2}$	$\frac{1}{2}$
			\flat \uparrow \uparrow \uparrow \uparrow		
\parallel	$\frac{1}{2}$	$\frac{1}{2}$	$\frac{1}{2}$	$\frac{1}{2}$	$\frac{1}{2}$

	$\frac{1}{2}$	$\frac{1}{2}$	$\frac{1}{2}$	$\frac{1}{2}$	$\frac{1}{2}$
			\flat \uparrow \uparrow \uparrow \uparrow		
\parallel	$\frac{1}{2}$	$\frac{1}{2}$	$\frac{1}{2}$	$\frac{1}{2}$	$\frac{1}{2}$

	$\frac{1}{2}$	\wedge	\wedge		
		\emptyset	\uparrow \uparrow \uparrow \uparrow		
\parallel	$\frac{1}{2}$	$\frac{1}{4}$ 0	\uparrow \uparrow \uparrow \uparrow		

--	--	--	--	--	--

--	--	--	--	--	--

--	--	--	--	--	--

--	--	--	--	--	--



1 1=60

2 'O, for a mass'

3 'The flat unraised spirits'

3 'Imaginary focus work'

VI/FL
CL
VA

TR
TU

SN/BT
BD

4 'Into a thousand parts'

ADD TP (again)

VI/FL
CL
VA
TP

TR
TU

SN/BT
BD

5 'Who' prologue-like'

VI/FL
CL
VA
TP

TR
TU

SN/BT
BD

VI violin	FL flute	FH f. horn	SN snare	TM timpani
VA viola	OB oboe	TP trumpet	BT bell tree	MR maraca
CO cello	CL clarinet	TB trombone	BD bass drum	SC susp cym
DB dbl bass	BN bassoon	TU tuba	GL tube bells	SB scrap block



② 1 'What was the impediment...'

GL *mf* (GT RING)

③ Lights up 'May I with right...'

RC

BCB

SN (2nd time only)

(1) 2 'Now are we all resolved'

RC

BCB

SN

RC

BCB

SN



PC

BN
CO
DB

SN

④

1 'Not worshipp'd with a waxen epithet' (Enter ambassadors)

TM

⑤

1 'Thus, then, in few...' 2 'Hear no more'

BELLS

⑥

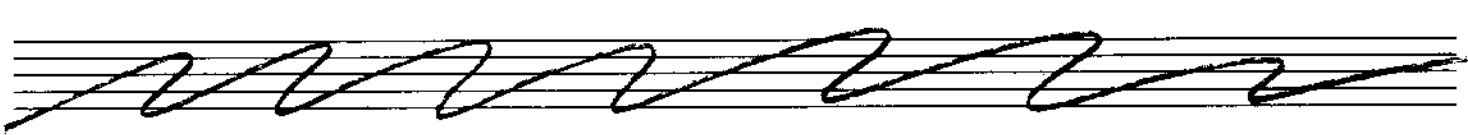
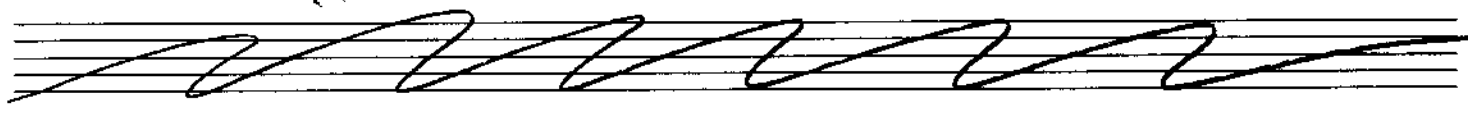
1 'Tennis balls...' 2 'We are glad...'

PIC
FHZ
FNI/TB

TB
TU

BT

take maraca



[3] 'my throne of frame'

(1)

FRZ
TRM

3/4

3/4

TB
TU

MR

(1)

FRZ
TRM

3/4

TB
TU

MR

I am coming on...

(2)

FRZ
TRM

3/4

3/4

3/4

TB
TU

MR

[5] 'more than did laugh ...'

GL
MR



⑦ $\text{♩} = 50$ $\text{C}^{\flat} \text{E}^{\flat} \text{G} / (\text{A}^{\flat} \text{C}^{\flat} \text{E}^{\flat})$
'We hope to make ...' '... no thought in us but France.'

TP1
TRZ/OB

BN
TB
TU

SC
BD

③ 'More feathers' mf ④ '... on foot be brought'

TP1
TRZ/OB

BN
TB
TU

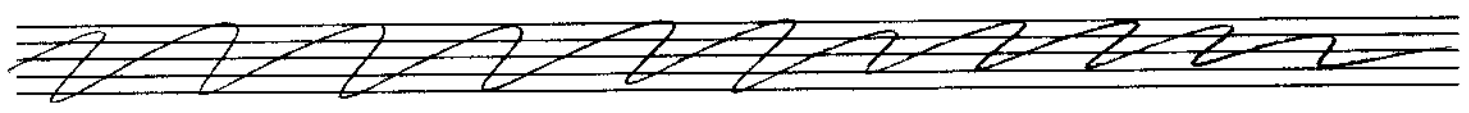
SC
BD

⑧ $\text{♩} = 40$ ① 'Now all...' *sim.*

VI
VA
CL

BN

SB
BD



VI VA CL

5

sim.

sim.

sim.

VI VA CL

VI VA CL

BN

SB BD

♩ = 100

9

Come, let's away..

VI VA

mp

GL

(as dry as possible)

mp

CO/PS

(pizz.)

mf



VI
VA

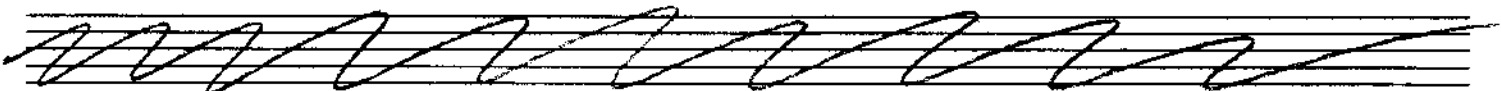
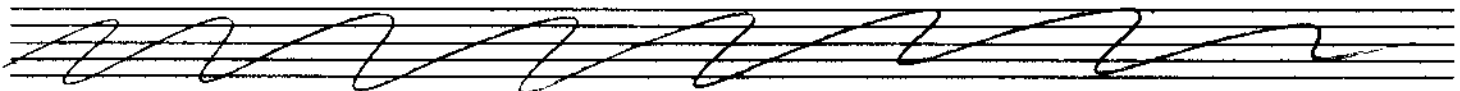
GL

CO/DB

VI
VA

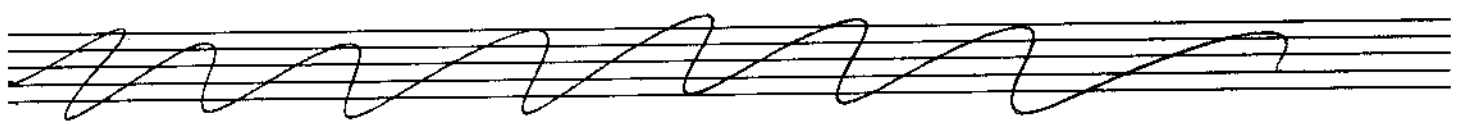
GL

CO/DB



Handwritten musical score for three staves. The top staff is labeled 'VI VA' and contains a melodic line with slurs and accents. The middle staff is labeled 'CL' and contains a similar melodic line. The bottom staff is labeled 'CB/B' and contains a bass line with slurs and accents. A fourth staff at the bottom contains a simple rhythmic pattern.

Handwritten musical score for three staves. The top staff is empty. The middle staff contains a melodic line with slurs and accents. The bottom staff contains a bass line with slurs and accents. A fourth staff at the bottom contains a simple rhythmic pattern.



⑩ $\text{♩} = 110$ $\frac{12}{11}$ 'New, lords, for France...'



⑪ Sec 4 straight to A (percussion (trumpet))
 Thus comes The English...
 ⑫ Marcato, menacing
 (=140 (if 2nd TP, double bass))

ONLY PERCUSSION

TP1 FH (TP mute) *pp*

DB TO *pp*

SN TM (SMOOTH UP AND DOWN BUT A AND Eb w/ NON-RHYTHMIC HITS)

TP1(2) FH

DB TO

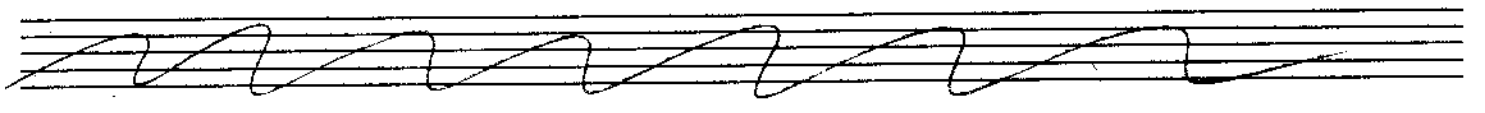
SN TM

② 'My most redoubted father...'

TP1(2) FH

DB TO

SN TM (ed lib. similar to previous measures) (SMOOTH UP AND DOWN BUT A AND D w/ NON-RHYTHMIC HITS)



TPK(2)
FH

PB
TU

SN
TM

3 'O pecc, Primu Dauphin!

TPK(2)
FH

PB
TU

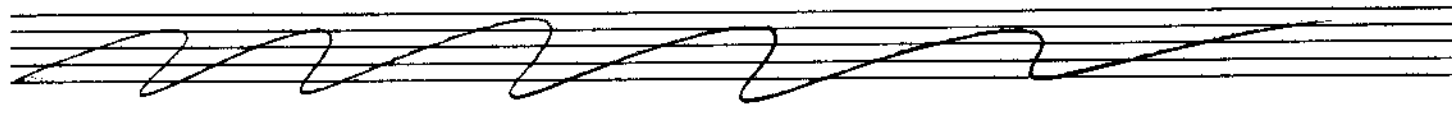
SN
TM

4 'well, tis not so...

TPK(2)
FH

PB
TU

SN
TM



15 'Think we king Henry strong...'

Handwritten musical score for measures 15-17. The score includes staves for Flute (FL), Bassoon (BS), Trombone (TM), and Timpani (TM).

Measure 15: Flute part has a melodic line with a slur. Bassoon part has a whole note chord with a sharp sign. Timpani part has a half note.

Measure 16: Flute part continues. Bassoon part has a whole note chord with a sharp sign. Timpani part has a half note.

Measure 17: Flute part has a melodic line with a slur. Bassoon part has a whole note chord with a sharp sign. Timpani part has a half note. There are handwritten notes: "(ad lib. runs)" and "(TM)".

16 'of that black horse...' 17 'The native might...' 18 Enter messenger 19 ♩ = 120 'He wills you'

Handwritten musical score for measures 16-19. The score includes staves for Violin (VA), Flute (FL), Trombone (TM), and Timpani (TM).

Measure 16: Violin part has a melodic line with a slur. Flute part has a whole note chord. Trombone part has a whole note chord. Timpani part has a half note.

Measure 17: Violin part has a melodic line with a slur. Flute part has a whole note chord. Trombone part has a whole note chord. Timpani part has a half note.

Measure 18: Violin part has a melodic line with a slur. Flute part has a whole note chord. Trombone part has a whole note chord. Timpani part has a half note. There is a circled "Cue" in the bassoon part.

Measure 19: Violin part has a melodic line with a slur. Flute part has a whole note chord. Trombone part has a whole note chord. Timpani part has a half note. There are handwritten notes: "(BN)" and "acc. mf".

20 'He sends you the most memorable line...' 21 'Or else what follows?' 22 'Bloody constrained...' 23 'for he is troubled...'

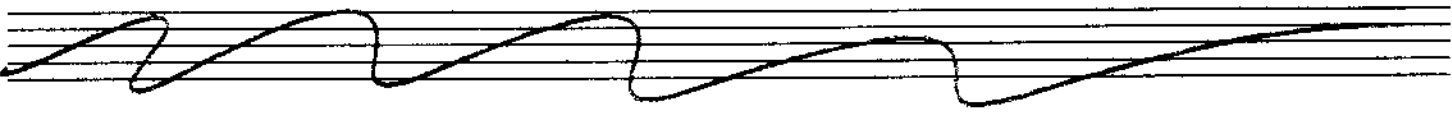
Handwritten musical score for measures 20-23. The score includes staves for Oboe (OB), Bassoon (BS), Trombone (TM), and Timpani (TM).

Measure 20: Oboe part has a melodic line with a slur. Bassoon part has a whole note chord. Trombone part has a whole note chord. Timpani part has a half note. There is a handwritten note: "ad lib. slight rhythms on".

Measure 21: Oboe part has a melodic line with a slur. Bassoon part has a whole note chord. Trombone part has a whole note chord. Timpani part has a half note.

Measure 22: Oboe part has a melodic line with a slur. Bassoon part has a whole note chord. Trombone part has a whole note chord. Timpani part has a half note. There is a circled "Cue" in the bassoon part.

Measure 23: Oboe part has a melodic line with a slur. Bassoon part has a whole note chord. Trombone part has a whole note chord. Timpani part has a half note. There is a circled "Cue" in the bassoon part.



13 1 'Thus with imagined wing...' 2 'of thought.' 3 'well-appointed king...' 4 'the shrill whistle'

FL 13

(As Cued) *p* \longrightarrow *ff* vs. *mf* #0m

GL (As Cued) *mf* Switch to pic. sc cup \rightarrow rim \rightarrow cup \langle *f* \rangle

5 'Borne with the invisible and creeping wind...'

STRINGS

All strings slide up and down length of board, piece. at random intervals

SC

6 'A city on the inconstant billows...' 7 'as dead as midnight still...'

STRINGS

SC

BT

8 'for who is he...' 9 10 11

FH/FL *mf* -3- -3- -3-

TB *mf*

CYMBALS

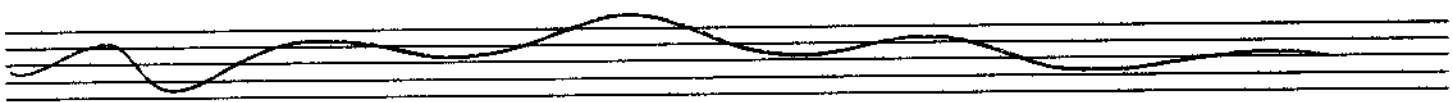
cm *p*



Handwritten musical score for the first system, featuring three staves: Flute (Fl), Trombone (Tb), and Cymbal (Cym). The Flute staff begins with a treble clef and a 4/4 time signature, marked with a forte 'f' dynamic. The Trombone staff starts with a bass clef and a 4/4 time signature, marked with a circled 'mf' dynamic. The Cymbal staff begins with a double bar line and a 4/4 time signature. The first measure of the Flute and Trombone parts contains a complex rhythmic figure. The second measure of the Flute and Trombone parts is heavily scribbled out with diagonal lines. The Cymbal part has a similar scribbled-out section in the second measure. The notation continues with various rhythmic patterns and rests across the remaining measures.

Handwritten musical score for the second system, featuring three staves: Flute (Fl), Trombone (Tb), and Cymbal (Cym). The Flute staff continues with a treble clef and 4/4 time signature. The Trombone staff continues with a bass clef and 4/4 time signature, marked with a 'p' dynamic. The Cymbal staff continues with a double bar line and 4/4 time signature. The notation shows rhythmic patterns and rests across the measures, with some handwritten annotations and markings.

Handwritten musical score for the third system, featuring three staves: Flute (Fl), Trombone (Tb), and Cymbal (Cym). The Flute staff continues with a treble clef and 4/4 time signature. The Trombone staff continues with a bass clef and 4/4 time signature, marked with a 'ppp' dynamic. The Cymbal staff continues with a double bar line and 4/4 time signature. The notation includes rhythmic patterns, rests, and a large arrow pointing right in the Trombone staff. The system concludes with a double bar line and a '121' marking above the staff.



14

$\text{♩} = 180$

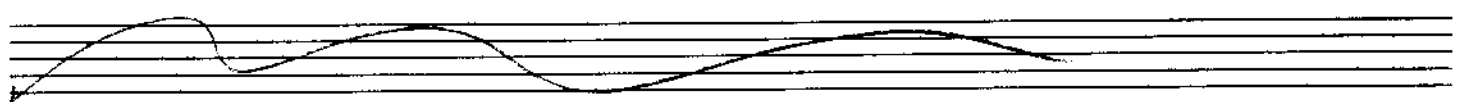
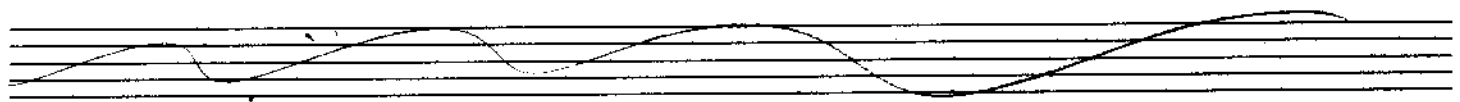


Enter soldiers

Handwritten musical score for the first system. It consists of two staves: a vocal line (VA) and a snare drum line (SN). The VA staff has a treble clef and contains a melodic line with a slur and a fermata. A handwritten note "circ myles" with an arrow points to a specific note. The SN staff has a drum clef and contains a rhythmic pattern of vertical strokes. Above the VA staff, there are handwritten annotations: a house icon, "Enter soldiers", and a tilde symbol (~). Above the SN staff, there are handwritten annotations: a tilde symbol (~) and a fermata symbol.

Handwritten musical score for the second system. It consists of three staves: a vocal line (VA), a tuba line (TBA), and a snare drum line (SN). The VA staff has a treble clef and contains a melodic line with a slur and a fermata. A handwritten note "One more..." with an arrow points to a specific note. The TBA staff has a bass clef and contains a melodic line with a slur and a fermata. The SN staff has a drum clef and contains a rhythmic pattern of vertical strokes. Above the VA staff, there are handwritten annotations: a house icon, "One more...", and a tilde symbol (~). Above the TBA staff, there are handwritten annotations: a tilde symbol (~) and a fermata symbol. Above the SN staff, there are handwritten annotations: a tilde symbol (~) and a fermata symbol.

Handwritten musical score for the third system. It consists of three staves: a vocal line (VA), a tuba line (TBA), and a snare drum line (SN). The VA staff has a treble clef and contains a melodic line with a slur and a fermata. The TBA staff has a bass clef and contains a melodic line with a slur and a fermata. The SN staff has a drum clef and contains a rhythmic pattern of vertical strokes. Above the TBA staff, there are handwritten annotations: a tilde symbol (~) and a fermata symbol. Above the SN staff, there are handwritten annotations: a tilde symbol (~) and a fermata symbol.



VA (4/4)

TM (4/4)

SD (4/4)

(a tempo) [3] (ALL HIT A. chord III)

TB

mf

TM

SD

TB

TM

SD

[4] On, on...

TB

TM

SD



Handwritten musical score for Tuba (TB) and Tom/Bass Drum (TOM/BD). The TB part features a 4/4 time signature and a 3-measure rest. The TOM/BD part includes the instruction "ad lib. similar tribal feel" and rhythmic notation with slash marks.

Handwritten musical score for Flute (FL) and Trombone (TB). The FL part includes the instruction "Good for Harry..." and notes with accents. The TB part includes the instruction "(slide all over)" and a wavy line representing a slide. Below the TB staff, there are notes for Tom/Bass Drum (TOM/BD) with accents and dynamic markings like "sfz" and "fff".

Handwritten musical score for item 15, titled "The plain-song" (see #19). It includes a tempo marking of 120 and a 4/4 time signature. The score consists of a single staff with a long rest and a dynamic marking of "20".

Handwritten musical score for item 16, titled "As young as I am". It includes a tempo marking of 60 and a 4/4 time signature. The score is written for Flute (FL) and features a melodic line with various articulations and dynamics.

Handwritten musical score for Flute (FL) featuring a melodic line with slurs and accents.

Handwritten musical score for Flute (FL) featuring a melodic line with slurs and accents.

Handwritten musical score consisting of a single staff with a wavy line, possibly representing a tremolo or a specific rhythmic pattern.

17

How yet resolves...

VI/VA

mf

SN

mf

VI/VA

SN

14

VI/VA

SN

14

VI/VA

SN

ppp

NGC

SD

^ [2] (gates open)

FI

BD

(Bugle call)

^



18 (Lights up on King of France, segue LOT3 into next scene)
(As wtd)

GL
Musical notation for Grand Lighting (GL) with notes and rests.

19 (Enter HGWes)

TP
Musical notation for Trumpet (TP) with notes and rests.

20
"though we seemed dead" "is imperial" "ho ransom" "is too poor" "condemnation is pronounced" "so much my office"

TR
70/DB
Musical notation for Trombone (TR) and Double Bass (DB) with notes and rests.

21 'Thou dost my office' (3)

J=40
Musical notation for Trombone (TR) with notes and rests.

22 'We are in God's hand'

FL/DB
TP
FH
BVI/VI/DB
Musical notation for Flute (FL), Double Bass (DB), Trumpet (TP), French Horn (FH), and Violin/Viola/Double Bass (BVI/VI/DB) with notes and rests.

23 'Now entertain conjecture ...'

OB/TP
CO
DB/VI
BD
Musical notation for Oboe (OB), Trumpet (TP), Clarinet (CO), Double Bass (DB), Viola (VI), and Bass Drum (BD) with notes and rests.



OB/TP

CO
PB/TU

BD

OB/TA

CO
PB/TU

BD

OB/TA

CO
PB/TU

BD

Em on OB, TP, CO, PB/TU

(ACT BREAK)



ACT 2

24

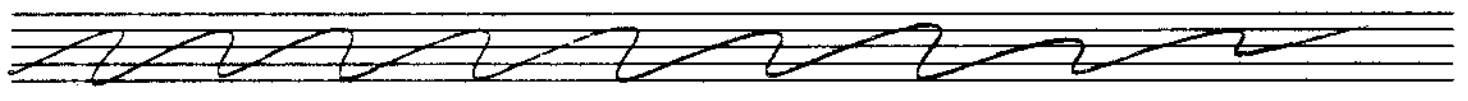
Δ $\frac{1}{11}$ Now entertain conjecture...
Tenderly

fl
 ob

mf (Snare roll 2nd x)
Tenderly

mf

(1) (2x) (2)



25
♩ = 40

30
1. Exit soldiers
Molto espressivo

OB (PI)
30

Molto espressivo

BN (DB)

AK

(PIZZ. VL)

BN (DB)

(PIZZ. CB)

26
♩ = 50

31
1. Exit Eppingham Legato, molto molto espressivo

FA

34

mf

SA
CO

P

PB

FI

VI
VA
CO

DB



(will be cut before here)

Handwritten musical score for the first system. It consists of three staves. The top staff is in treble clef with a 4/4 time signature. The middle staff is also in treble clef with a 4/4 time signature. The bottom staff is in bass clef with a 4/4 time signature. The music includes several notes and rests, with some dynamic markings like *p* and *mf*.

27 Enter Gloucester ad lib. controlled Brengy perc. 1/2

Handwritten musical score for the second system, starting with measure 27. It includes a snare drum staff (SN) and a treble clef staff. The treble staff has notes and rests, with a dynamic marking of *mf*. The snare staff has rhythmic notation. A circled number 27 is next to the measure number.

28 ad lib. controlled Brengy perc. 1/2

33 (TACIT FOR WE 26)

Handwritten musical score for the third system, starting with measure 28. It includes multiple staves: FL, FH1, FH2, TU, and SN. The FL staff has complex notation with fingerings (3, 3, 3, 3, 3, 3) and a circled number 28. The TU staff has notes and rests, with a circled number 33 and the text "(TACIT FOR WE 26)". The SN staff has rhythmic notation. A circled number 33 is also present.

(same starting on C)

Handwritten musical score for the fourth system. It includes multiple staves: FL, FH1, FH2, TU, and SN. The FL staff has notes and rests, with a circled number 2 and the text "(same starting on C)". The TU staff has rhythmic notation. The SN staff has rhythmic notation. A circled number 2 is also present.



FL
FNI
FHZ

(12)

TO

SN

FL
FNI
FHZ

TO

SN

2] CONSERVABLE
- stay for
- death

TO

3] They have said their prayer

A



29

SEE (10)

OS/FP
F#3

St. Crispin's Day

30

1 - 90 (TUBA/KRPS)
I pray thee (1) (6.2) (2)
These my joints
I'll the Constable

31

Dispose the dog! <Beat> (28)
TUBA SOLO

32

Enter French (see 25) MF
TUBA SOLO

33

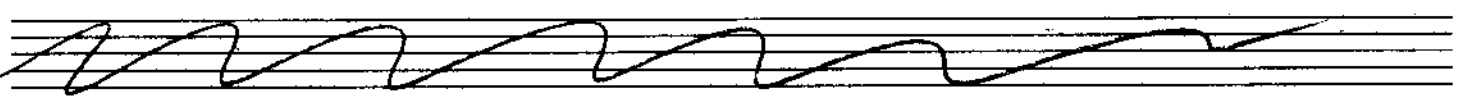
"Else shames will be too long..." (overdote, B)

33B

See 16 (FLUTE SOLO)

34

French enter



(EXTRA) TR
(MENS) TR

TR FL

TR FL

35

pre-lights piano (one play)

TR

36

Well have we done... (snare only fill out ott)

36C

The Earl of Suffolk

36C

TR

37

Enter Havelok

TR



